



**Woolden Hill**  
Primary School

# Welcome!

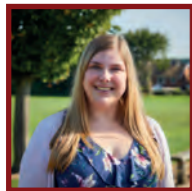
Welcome to Woolden Hill Primary School! We are delighted to share with you our vision and values to help you get a true flavour of our school.

Our school is a vibrant and creative place to be! We have a wonderful outdoor area where we promote real-life experiences for our children regardless of their age. Our pond and forest school help children to gain confidence and captures that buzz for learning where children are curious to learn more. We believe that linking classroom experiences into real life concepts will help children to understand the bigger picture about education and ultimately ensure that they are ready for the quickly changing world that we live in. We have excellent support for all children, including those with additional needs. Our pastoral team help to ensure that pupil wellbeing is a focus and remains at the forefront of our minds.

We have strong links with our community and believe in working together to inspire the children to be proud of the place in which they live. Our parents are fantastic and actively support the school through numerous parent sharing events and our wonderful Parent and Teacher Association—the WHA.

We are confident that you find us a welcoming school; one where you know your child will flourish and realise their potential. If you have any further questions, please feel free to contact us. We operate an 'open door' policy at Woolden Hill and recognise the importance of communicating with the parents and families of the children in our care. We welcome visitors to our school and if you wish to come and have a look around please feel free to make an appointment by contacting the school office.

We look forward to seeing you soon!



Mrs Sarah Sadler  
Executive Head



Mrs Candi Norman  
Head of School

***“Pupils and staff are happy at this school. Pupils’ behaviour is good, and everyone gets along together in this community school. We saw pupils being polite and kind to each other. Pupils are courteous, respectful and helpful.” Ofsted 2019***



## Our Vision and Values

At Woolden Hill we believe that all pupils have the ability to achieve wonderful things and reach their full potential through our 'limitless learning' curriculum. Our aim is to ensure that our children are happy and enjoy their time at school. This is achieved by providing an environment where children feel safe to explore the new challenges and learning opportunities they encounter and be recognised for all their achievements.

We aim to help develop creative children who are **inspired** learners, are **considerate** citizens, are **independent** thinkers, have **curious & enquiring** minds and are **caring** friends.



“Achieving success  
creating futures together.”

# Learning Journeys

## Being life-long learners

We provide a creative curriculum that is bespoke to the children in our school. Our teachers use research to ensure that our children have the best pedagogical approach to develop the skills and knowledge that they will need to cement understanding through their school career.

Our teachers use news about our local community and what is happening nationally and internationally to plan topics that are relevant to our children. We strongly support children to become avid readers and have our very own Reading Patron that visits the school regularly. We have a well-stocked library both inside and outside so that children can become immersed in books at any time of the day.

We believe children learn better when they are encouraged to use their imagination and apply their learning to engaging contexts. Our curriculum provides lots of learning challenges throughout the academic year that require children to solve problems, apply themselves creatively and express their knowledge and understanding effectively across the curriculum. Our partnerships between other schools in Discovery Trust provide additional opportunities such as Maths and Science conferences to enrich the school experience.



# Learning Enrichment



At Woolden Hill, we take pride in the vast number of opportunities that we offer children beyond the four walls of the classroom. Many topics are supported with visits to interesting places, such as the zoo, farm parks, museums, historic attractions and gardens. Memorable residential trips take place in Year 4 and Year 6 to develop children's resilience and independence. Woolden Hill is also partnered with the Asha Charity, based in New Delhi, who supports children who live in the slums to access education. Each year our own children raise funds for the charity and send letters and artwork to the children.



Our large resourced indoor and outdoor areas ensure that specialist teachers provide sporting and music activities before, during and after school. Most of our children choose to attend extra-curricular clubs that are on offer throughout the year.



The Woolden Hill Breakfast and After School Clubs offer Wrap Around Care for parents and a holiday club provides care between terms.

We provide many varied opportunities throughout a pupil's life at Woolden Hill and we offer a huge range of unusual, interesting and challenging enrichment activities. These remain in our pupil's hearts and minds long after they leave us.

***“Parents and pupils appreciate the support and learning opportunities that staff provide. This includes the many extra activities pupils enjoy. Pupils were particularly keen to tell us about judo and cookery classes. The rock steady club is a favourite for those with a musical interest.” Ofsted 2019***

***“If I could make one thing better about school, it would be for school to be open for longer so I can come on a Saturday!” Y5 Pupil***





## Learning environment

Woolden Hill is a one form entry primary school and therefore has one class per year group.

In addition to our vibrant classroom spaces, we also have break-out spaces to allow for pupils to be taught in a variety of settings and group arrangements. Our Nurture Room also provides a space for our Emotional Literacy Support Assistant to work with children who may need support with friendships, bereavements or helping to overcome a personal issue.

We have a Computer Suite, together with 30 tablets, providing pupils with interactive tools and information across the curriculum. An additional benefit of being in the Discovery Trust is the ability to share innovative digital technology such as drones, 3D printers and Green Screens to enrich our Computing Curriculum.

Our amazing outdoor spaces help to inspire the children further and take their learning in their own direction. We have our own pond, outdoor classroom, memory garden, reading shed, willow dome and Forest School. These facilities are used all year round to support our pupils in applicational learning. We can also walk to Bradgate Park and most year groups access this wonderful facility over the year to help to support their understanding of the local environment. We are very lucky to have Swithland on our doorstep which features in our annual visits to other places.



*“Leaders and other staff are ambitious for pupils. They want all pupils to have the knowledge and skills to be successful in their futures.” Ofsted 2019*



## Pastoral Support

We care about every child in our school and, through our strong commitment to pastoral care we strive to ensure that we provide outstanding support for all of our pupils and families. Our school is very proud of our friendly, open door policy where parents and staff are able to openly discuss any issues and resolve them together. We strongly support our local community and have many community events which unite the whole of Anstey together.

Woolden Hill prides itself on supporting all children, regardless of their background or additional circumstances. We believe that a child's potential should not be limited or predetermined. In each school day we encourage every child to develop confidence in themselves. For children with specific requirements, our school is highly inclusive and will work with a range of professionals to ensure that all needs are met. In addition, our access to EPIC Educational Psychology and Speech and Language team ensures that, if necessary, children receive rapid support.

At Woolden Hill we believe that we are starting blocks of education that builds a strong foundation that help children have a natural desire to continue to strive for greatness at secondary school. We have excellent links with our feeder schools and plan many opportunities for children to visit the schools and experience transition events to prepare them on this journey.

***“Leaders ensure that the teaching and support for pupils with special educational needs is effective. Staff are ambitious for what pupils with SEND can achieve.” Ofsted 2019***



# Being a Discovery School

Woolden Hill has been proud to be part of Discovery Trust since 2014.

Discovery Trust is a partnership of like-minded schools who work together to provide a first-class education for the 4500 pupils it serves. Being in the Trust allows Woolden Hill to collaborate and share research into the latest practise in Teaching and Learning. This helps our teachers to apply innovative practise from this country and other world leading countries and ensure that our pupils are provided with the very best curriculum and resources available.



Woolden Hill



Mowmacre Hill



Captain's Close



Kibworth CofE



Parkland Primary



Fardon Fields



Sileby Redlands



Merrydale



Leighfield



Braunstone Community



Danemill



Fossebrook



Greystoke

Our children also have the opportunity to collaborate with one another through pupil conferences sporting events and many other experiences help to enrich our school offer even further. Through our on-line learning offer, schools have also developed shared projects for children to access with other. We even have our annual Awards Night held at the Walkers Stadium to celebrate pupil success!







To find out more or arrange a visit please contact:

Woolden Hill Primary School, Netherfield Road, Anstey, Leicestershire, LE7 7ES

Tel: 0116 236 2154 Email: [admin@dsatwooldenhill.org](mailto:admin@dsatwooldenhill.org) Web: [www.wooldenhillprimary.org.uk](http://www.wooldenhillprimary.org.uk)

